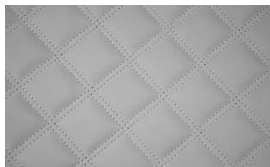
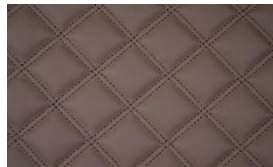




## 5259 - CARAT



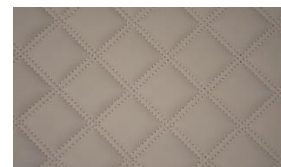
Col. 13



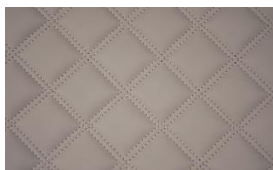
Col. 51



Col. 55



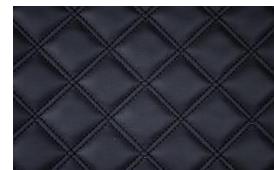
Col. 73



Col. 76



Col. 80



Col. 100

**Laize - Width - Breite - Altezza :** 137 cm (53")

**Nombre de coloris :** 7

**Poids - Weight - Gewicht - Peso :** 920 g/ml

**Composition - Zusammensetzung - Composizione :** 74% PU 17% PES 9% CO

**Utilisation - Use - Gebrauch - Uso :**



**Martindale :** 200 000 trs

**Norme - Standard - Norm - Norma :** EN1021 1&2



[www.casal.fr](http://www.casal.fr)